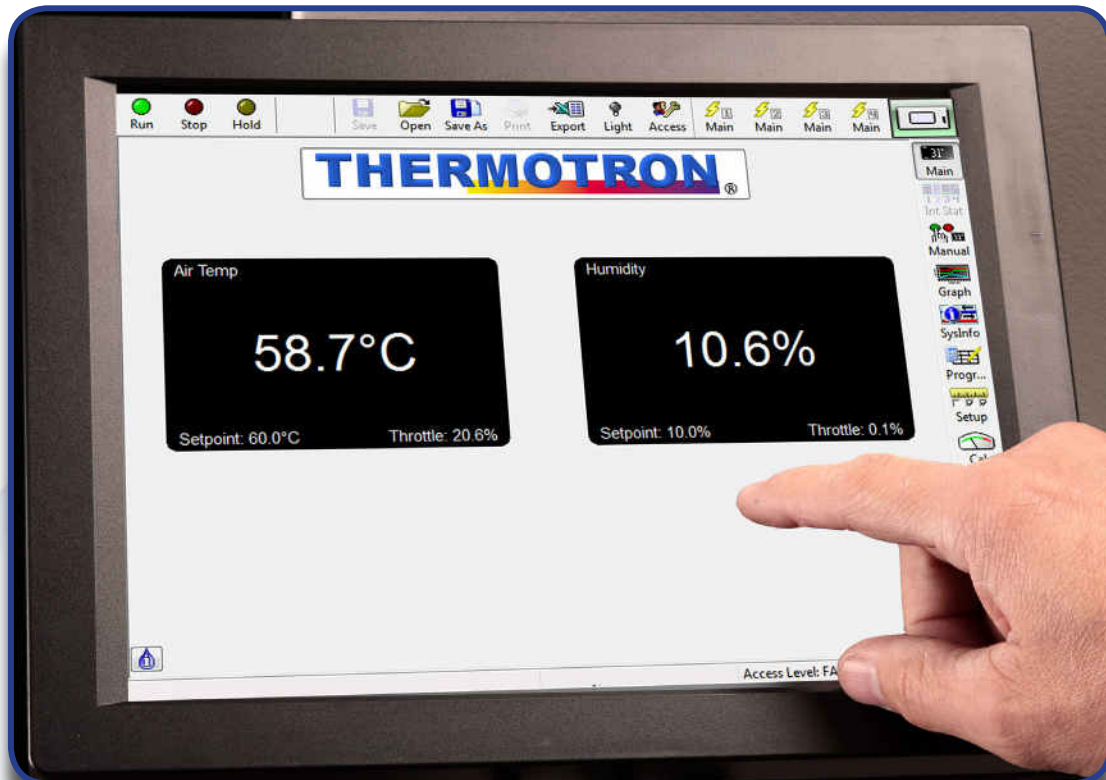


# THERMOTRON®

## 8800 Programmer Controller



### Intuitive Touchscreen Technology

ThermoTron's exclusive 8800 Programmer Controller incorporates state-of-the-art controlling, monitoring, graphing, and report generation on a 12" color touchscreen. Data collection and operation are easy and reliable with a Windows®-based interface, giving the controller a familiar look and feel. The unique screens allow users increased data access with a single touch. The 8800 Programmer Controller, a true paperless recorder, stores 10-plus years of data. The controller is Ethernet-compatible and web-enabled for anytime/anywhere access.

# 8800 Programmer Controller: Robust, Intuitive, Secure

The 8800 Programmer Controller supports robust operations with a familiar, intuitive user interface. USB ports and the serial communications panel are ergonomically located near the controller for fast, convenient connection and data transfer.

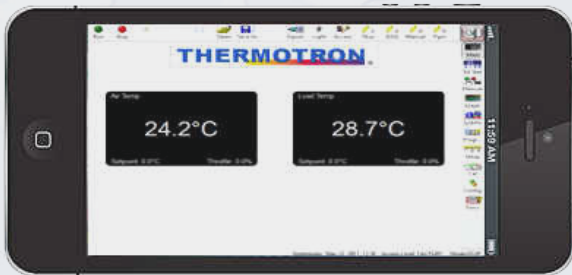
The secure multi-level, password-based system protects the chamber and sensitive data.

The 8800 Programmer Controller is available on SE, AGREE, Walk-In, and custom product lines. A specialized version of the 8800 can be found on AST and Thermal Shock product lines.

The controller can be retrofitted to most existing environmental testing chambers.



## VNC Compatible



The 8800 includes a customizable VNC Server so users can control and monitor the controller remotely with a smartphone or tablet anytime from anywhere in the world.

## PTC - Product Temperature Control

The 8800 is programmed with distinctive algorithms to not only monitor the product's temperature, but to control it.

## PDC - Product Dewpoint Control

Unique algorithms programmed into the 8800 automatically maintain the product to be warmer than the surrounding air, preventing condensation.

## Expanded Graphing Capabilities

- Drag & Zoom
- Cursor Bar
- Enhanced Calendar
- Status Flags

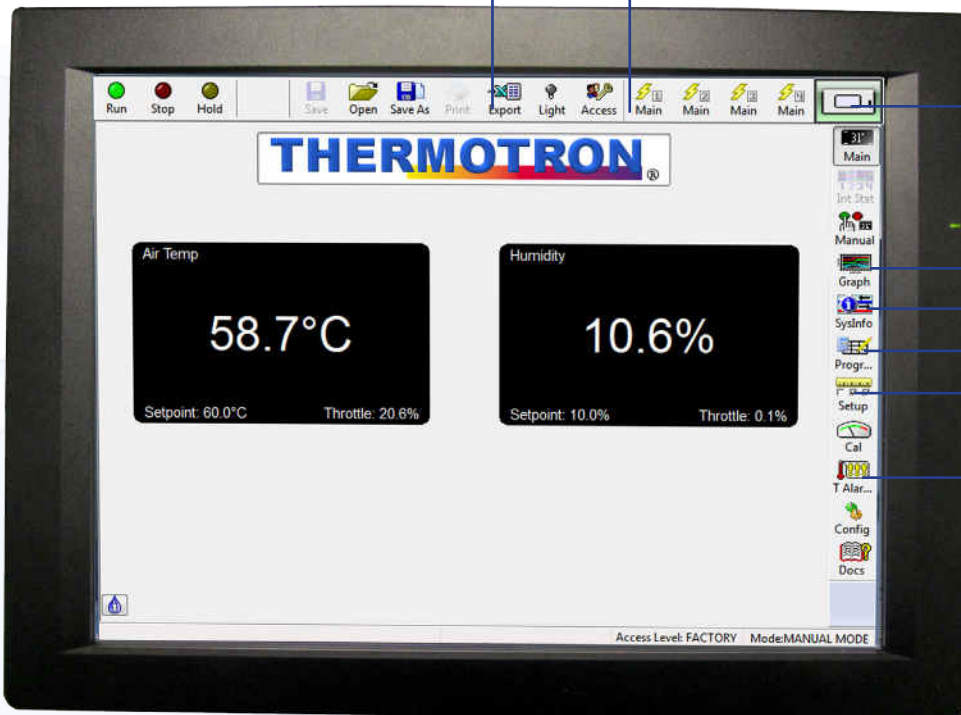
## Reporting

- Electronic or Printable
- Exportable Raw Data in .csv Format

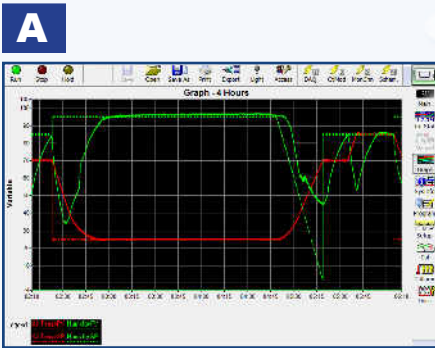
Rapid export button transfers data in a common spreadsheet format.

Quick Navigation buttons provide shortcuts to user-defined access screens.

Door Indicator tells users if the door is open or closed.



A  
B  
C  
D  
E

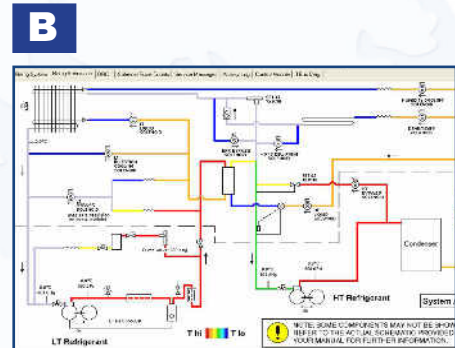


**Graphing Screen** offers expanded capabilities with enhanced programming and reporting.

The Activity Log screen displays a table of events with columns for Date, Time, and Description. Below the table are checkboxes for 'Show Selections', 'Level low', 'Show Messages', and 'Show Events'.

Date	Time	Description
2/18/2012	13:42	Unit Setpoint Change: 10.0%
2/18/2012	13:42	Model: 10.0% (10.0%)
2/18/2012	13:42	Model: 10.0% (10.0%)
2/18/2012	13:42	Model: 10.0% (10.0%)
2/18/2012	13:42	Model: 10.0% (10.0%)
2/18/2012	13:42	Model: 10.0% (10.0%)
2/18/2012	13:42	Model: 10.0% (10.0%)
2/18/2012	13:42	Model: 10.0% (10.0%)
2/18/2012	13:42	Model: 10.0% (10.0%)
2/18/2012	13:42	Model: 10.0% (10.0%)

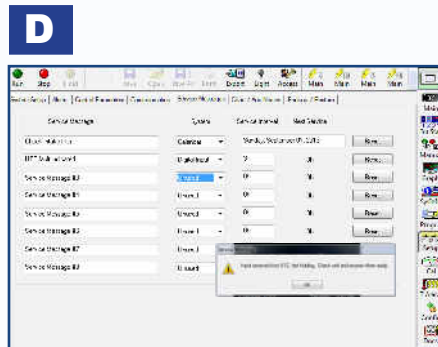
**Activity Log** screen provides 10-plus years of comprehensive equipment history.



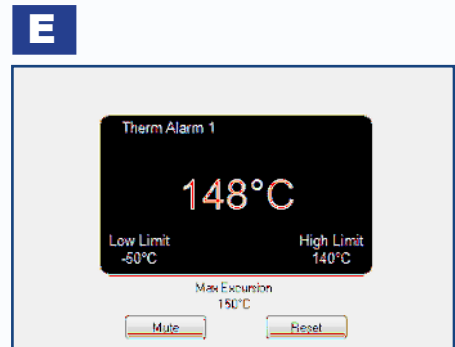
**Refrigeration Schematics Screen** assists with electronic monitoring and troubleshooting.\*



**Program Entry** allows user to load, view, and edit profiles via a wizard or manual entry.



**Service Messages** allow users to program maintenance notifications.



**Therm-Alarm®** prevents temperatures from exceeding user-defined limits

\*Standard on SE-Series models.

<b>General</b>	
Channels	One to four independently programmable channels
Measuring Accuracy	0.25% of span typical
Temperature Scale	Celsius or Fahrenheit (user selectable)
Color display	12" touchscreen display (800x600 resolution)
Resolution	0.1°C or F, 0.1% RH, or 0.01 for other linear applications
Sample Rate	Process variable samples every 0.1 seconds
Real Time Clock	Internal real time clock provides time of day and delayed start capability
<b>Software</b>	
ThermoTrak II	Simplifies lab management by allowing multiple controllers to be linked to a central computer
VNC Compatible	Allows users to remotely control the 8800 from a PC, smartphone, or tablet
Free Software Updates	Available at <a href="http://www.thermotron.com">www.thermotron.com</a>
<b>Programming</b>	
Control Method	Digital, one of four independent parameter groups can be selected for each interval
Proportional Band	Programmable 1 to 300
Integral Time	Programmable 0 to 1,000 seconds
Machinery Cycle Time	Software controlled
Intervals	Limited only by internal storage capacity
Interval Length	1 second to 99 hours and 59 minutes, with 1 second resolution
Operation	Automatic or manual mode
Program Storage	Limited only by internal storage capacity
Looping	Up to 64 loops per program; can be repeated up to 9,999 times; up to 64 nested loops per program
<b>Outputs</b>	
Process Outputs	Proportional-control outputs, 1 to 15 second duty cycle; 0 to 10 VDC/0 to 20 mA, staged heating and cooling, bypass, MTO, and system enable; TTL high/low
Analog Outputs	Analog outputs send throttles, setpoints, or process variables; 2 standard, 8 total. (Optional)
Alarm Outputs	Deviation alarm output, TTL high (active); programmable per interval for each channel; each channel has configurable "Program Value Limits" for over/under programming protection.
Event Outputs	Outputs can be programmed independently or manually controlled; 2 standard, up to 16 event outputs are available
<b>Inputs</b>	
Inputs 1 and 2	Thermocouple (type "T", "K", "E", or "J") or RTD
Inputs 3 through 8	Thermocouple (type "T", "K", "E", or "J")
Analog Inputs	4 analog inputs available. 0-20 mA or 0 to 10 VDC

### Comprehensive Service Network

Thermotron has the largest, best equipped, and most highly trained direct sales representatives, application engineers, and field service engineers that provide support before and after the sale. From preventive maintenance and service seminars to parts, worldwide service centers, and technical support, expert assistance is available throughout the life of your equipment.

### Our Promise

We use the precepts of quality to grow and continuously improve our company to meet and exceed customers' expectations. As industries evolve and specifications change, our customers face new challenges. We help them meet those challenges by providing state-of-the-art equipment. We help great companies make great products.

# THERMOTRON®

Thermotron Industries  
291 Kollen Park Drive  
Holland, Michigan 49423  
Phone: (616) 393-4580  
Fax: (616) 392-5643  
[info@thermotron.com](mailto:info@thermotron.com)  
[www.thermotron.com](http://www.thermotron.com)  
©THERMOTRON INDUSTRIES  
July 2013 PRINTED IN USA

Thermotron Industries, U.K.  
Newton House  
Winch Road  
Kent Science Park  
Sittingbourne, Kent  
ME9 8EF England  
Phone: 01795 436333  
Fax: 01795 436777  
[sales@thermotron.co.uk](mailto:sales@thermotron.co.uk)