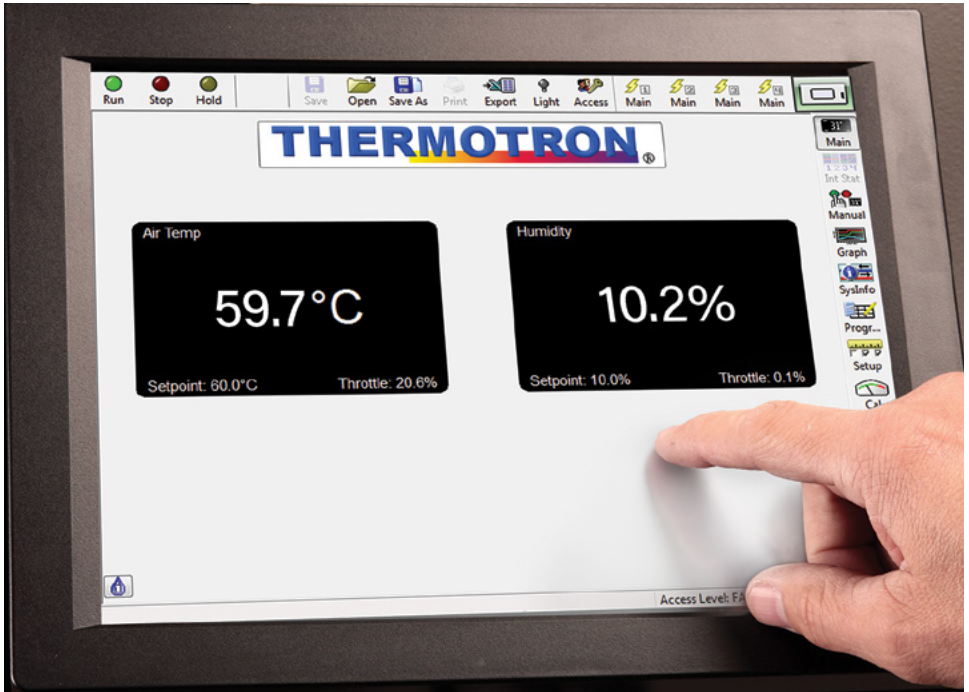


8800 PROGRAMMER CONTROLLER



Robust, Intuitive, Secure

Thermotron's exclusive 8800 Programmer Controller incorporates state-of-the-art controlling, monitoring, graphing, and report generation on a 12" color touchscreen. Data collection and operation are easy and reliable with a Windows®-based interface, giving the controller a familiar look and feel. The unique screens allow users increased data access with a single touch. The 8800 Programmer Controller, a true paperless recorder, stores more than 15 years of data. The controller is Ethernet-compatible and web-enabled for anytime/anywhere access.

FEATURES

The 8800 Programmer Controller supports robust operations with a familiar, intuitive user interface. USB ports and the serial communications panel are ergonomically located near the controller for fast, convenient connection and data transfer.

The secure multi-level, password-based system protects the chamber and sensitive data.

The 8800 Programmer Controller is available on SE, AGREE, Walk-In, and custom product lines. A specialized version of the 8800 can be found on AST and Thermal Shock product lines.

The controller can be retrofitted to most existing environmental testing chambers.

PTC: Product Temperature Control

The 8800 is programmed with distinctive algorithms to not only monitor the product's temperature, but to control it.

Expanded Graphing Capabilities

- Drag & Zoom
- Cursor Bar
- Enhanced Calendar
- Status Flags

Reporting

- Electronic or Printable
- Exportable Raw Data in .csv Format

PDC: Product Dewpoint Control (optional)

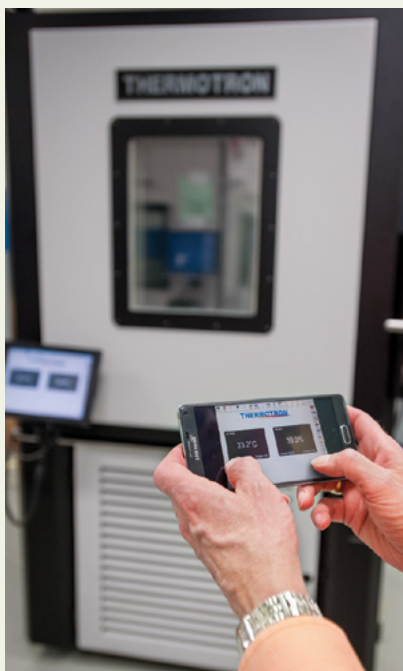
Unique algorithms programmed into the 8800 automatically maintain the product to be warmer than the surrounding air, preventing condensation.



VNC (Virtual Network Computing) Compatible

The 8800 Controller is a vital component of many Thermotron Environmental Test Chambers and Thermal Shock Chambers. Now you can have access to the Controller display screen even if you are away from the lab. To better align with a mobile workforce, the 8800 Controller is equipped with a VNC (Virtual Network Computing) Server. With the Controller connected to a network, you can enable its VNC server, which allows the test chamber to be remotely monitored or controlled through a desktop computer, mobile device, or tablet with VNC software.

With wireless access to the controller, you'll now be able to maintain productivity within your office space, while remotely checking in on your testing process. Know everything is functioning properly, with confidence, as you utilize this practical functionality to streamline your efforts.



SAMPLE SCREENS

Navigation Buttons

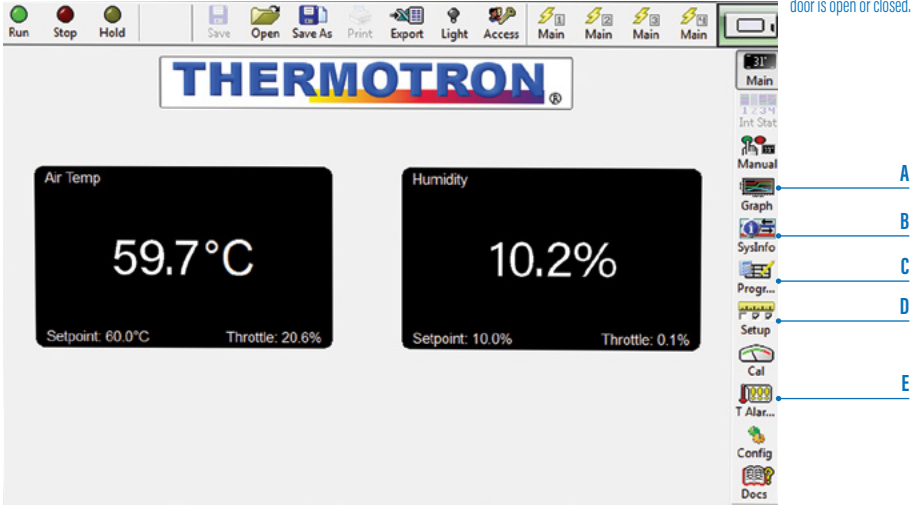
Shortcuts to user-defined access screens.

Export Button

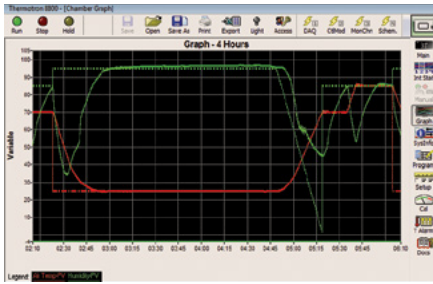
Transfers data to a common spreadsheet format.

Door Indicator

Indicates whether the door is open or closed.



A. GRAPHING SCREEN



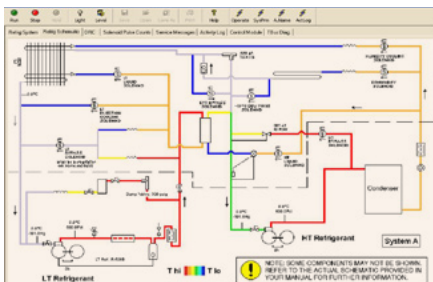
Offers expanded capabilities with enhanced programming and reporting.

B. ACTIVITY LOG

Date	Time	Description
11/19/07	15:28	1 Power Failure Occurred on Friday November 16, 2007 at 15:32
11/19/07	15:28	Chamber Shutting Down
11/19/07	15:28	Chamber Powering Up
11/19/07	15:28	Chamber Shutting Down
11/19/07	15:28	Chamber Powering Up
11/19/07	15:32	Chamber Standby Program Run Mode. Profile: 8800R950-SP3 (3) (1) .aps
11/19/07	15:32	Chamber Standby Program Run Mode. Profile: 8800R950-SP3 (3) (1) .aps
11/19/07	15:32	Changed Access Level Programme.
11/19/07	15:33	Changed Access Level One.

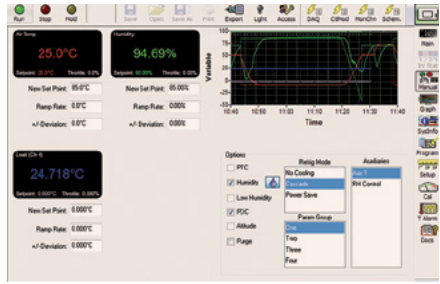
Provides more than 15 years of comprehensive equipment history.

B. REFRIGERATION SCHEMATICS*



Assists with electronic monitoring and troubleshooting.

C. PROGRAM ENTRY



Allows users to load, view, and edit profiles by utilizing a wizard or by manual entry.

D. SERVICE MESSAGES

Service Message	System	Service Interval	Next Service
Check Intake Filter	Calendar	Sunday, September 03, 2012	Reset
UTC Full Indicator	Digital Input	3	On
Service Message 83	Unused	On	On
Service Message 84	Unused	On	On
Service Message 85	Unused	On	On
Service Message 87	Unused	On	On
Service Message 88	Unused	On	On

Allow users to program maintenance notifications.

E. THERMALARM®



Prevents temperatures from exceeding user-defined limits.

*Standard on SE-Series models.

GENERAL SPECIFICATIONS

General

Channels	One to four independently programmable channels
Measuring Accuracy	0.25% of span typical
Temperature Scale	Celsius or Fahrenheit (user selectable)
Color Display	12" touchscreen display (800 x 600 resolution)
Resolution	0.1°C or F, 0.1% RH, or 0.01 for other linear applications
Sample Rate	Process variable samples every 0.5 seconds
Real Time Clock	Internal real time clock provides time of day and delayed start capability

Software

ThermoTrak II	Simplifies lab management by allowing multiple controllers to be linked to a central computer
VNC Compatible	Allows users to remotely control the 8800 from a PC, smartphone, or tablet
Free Software Updates	Available at www.thermotron.com

Programming

Control Method	Digital, one of four independent parameter groups can be selected for each interval
Proportional Band	Programmable 1 to 99,999
Integral Time	Programmable 0 to 1,000 seconds
Machinery Cycle Time	Software controlled
Intervals	Limited only by internal storage capacity
Interval Length	1 second to 99 hours and 59 minutes, with 1 second resolution
Operation	Automatic or manual mode
Program Storage	Limited only by internal storage capacity
Looping	Up to 64 loops per program; can be repeated up to 9,999 times; up to 64 nested loops per program

Outputs

Process Outputs	Proportional-control outputs, 1 to 15 second duty cycle; 0 to 10 VDC/0 to 20 mA, staged heating and cooling, bypass, MTQ, and system enable; TTL high/low
Analog Outputs	Analog outputs send throttles, setpoints, or process variables; 2 standard, 8 total. (Optional)
Alarm Outputs	Deviation alarm output, TTL high (active); programmable per interval for each channel; each channel has configurable "Program Value Limits" for over/under programming protection.
Event Outputs	Outputs can be programmed independently or manually controlled; 2 standard, up to 16 event outputs are available

Inputs

Inputs 1 and 2	Thermocouple (type "T", "K", "E", or "J") or RTD
Inputs 3 through 8	Thermocouple (type "T", "K", "E", or "J")
Analog Inputs	4 analog inputs available. 0-20 mA or 0 to 10 VDC

Your Service

You will have the best before- and after-service care in the industry. Thermotron has the largest, best equipped, and most highly-trained direct sales representatives, application engineers, and field service engineers to help throughout the entire purchasing process. After your installation, you'll receive options for preventive maintenance, along with everything from yearly service seminar training to parts, worldwide service centers, and technical support. Expert assistance will be available throughout the life of your equipment.

Your Promise

We promise to meet and exceed your expectations by continually growing and improving our company. As industries evolve and specifications change, our customers face new challenges. We'll help meet your challenges by providing quality, state-of-the-art equipment. Quality. Trust. Confidence. Build yours with a Thermotron.

THERMOTRON.COM

US: 291 Kollen Park Drive, Holland, Michigan 49423 | P: (616) 393-4580 | F: (616) 392-5643 | info@thermotron.com

UK: Winch Rd., Kent Science Park, Sittingbourne, Kent, ME9 8EF England | P: 01795 436333 | F: 01795 436777 | sales@thermotron.co.uk